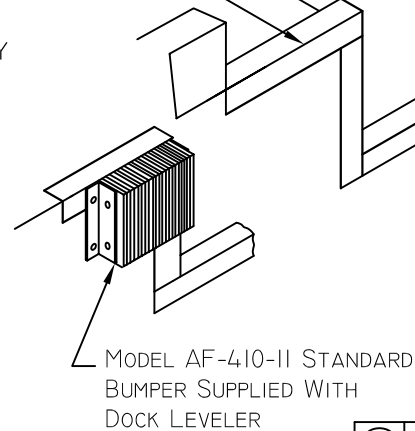


NOTES:

SEE SHEET 2 FOR DIMENSIONS.
 ALL PIT CONSTRUCTION, PIT STEEL, CONDUIT AND BUMPER ANCHORS ARE SUPPLIED AND INSTALLED BY OTHER THAN NORDOCK.
 KEEP ALL CORNERS SQUARE AND WALLS PLUMB.
 RECOMMENDED CURB ANGLE IS 3" x 3" x 1/4" WITH ANCHORS ON 12" CENTERS.

DIMENSIONS

MODEL _____
 INSIDE WIDTH - A _____
 INSIDE LENGTH - B _____
 REAR DEPTH - C _____
 FRONT DEPTH - D _____



(I.D.)	QTY.	DESCRIPTION	MATL	REMARKS
			Pit Construction Dock Levelers	
<small>DO NOT SCALE DRAWING - UNLESS OTHERWISE SPECIFIED DIM ARE IN INCHES ANGULAR TOL. ±0°30' FRAC. TOL. ±1/32" DEC. TOL. ±.010</small>				
<small>THE INFORMATION HEREON IS THE PROPERTY OF Nordock Inc. BY ACCEPTING THIS INFORMATION THE BORROWER AGREES THAT IT WILL NOT BE USED FOR ANY PURPOSE OTHER THAN THAT FOR WHICH IT WAS PROVIDED.</small>		DATE: 12/3/02	DR: DG	APP'D: _____ SCALE: _____
SHEET # 1 OF 2		DWG. NO.: 49-0005		REV:

Dock Leveler Pit Dimensions

19 " Frame Models

Nominal Dock Leveler Size		Dimensions			
Width	Length	A - Inside Width	B - Inside Length	C - Rear Depth	D - Front Depth
6 Feet	6 Feet	74"	63"	19 1/2"	20"
6 Feet	8 Feet	74"	87"	19 1/2"	20"
6 Feet	10 Feet	74"	111"	19 1/2"	20"
6.5 Feet	6 Feet	80"	63"	19 1/2"	20"
6.5 Feet	8 Feet	80"	87"	19 1/2"	20"
6.5 Feet	10 Feet	80"	111"	19 1/2"	20"
7 Feet	6 Feet	85"	63"	19 1/2"	20"
7 Feet	8 Feet	85"	87"	19 1/2"	20"
7 Feet	10 Feet	85"	111"	19 1/2"	20"

23 " Frame Models

Nominal Dock Leveler Size		Dimensions			
Width	Length	A - Inside Width	B - Inside Length	C - Rear Depth	D - Front Depth
6 Feet	6 Feet	74"	63"	23 1/2"	24"
6 Feet	8 Feet	74"	87"	23 1/2"	24"
6 Feet	10 Feet	74"	111"	23 1/2"	24"
6 Feet	12 Feet	74"	135"	23 1/2"	24"
6.5 Feet	6 Feet	80"	63"	23 1/2"	24"
6.5 Feet	8 Feet	80"	87"	23 1/2"	24"
6.5 Feet	10 Feet	80"	111"	23 1/2"	24"
6.5 Feet	12 Feet	80"	135"	23 1/2"	24"
7 Feet	6 Feet	85"	63"	23 1/2"	24"
7 Feet	8 Feet	85"	87"	23 1/2"	24"
7 Feet	10 Feet	85"	111"	23 1/2"	24"
7 Feet	12 Feet	85"	135"	23 1/2"	24"